

KBR

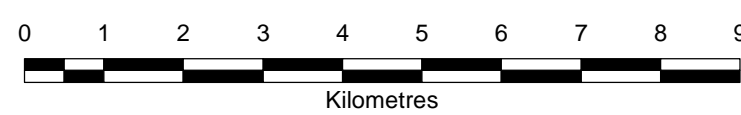
© Kellogg Brown & Root Pty Ltd
 ABN 91 007 660 317
 6EW553-001-TD-WE-QIS-0001



Queensland Government
 Department of Natural Resources and Mines
 13 QGOV (13 74 68)
 www.dnrm.qld.gov.au

Legend

Settlement Priority	New Gauges	Reservoirs	Highway
Very Low	Existing Gauges	Major Watercourse	Secondary Road
Low	Drainage Basin	Minor Watercourse	Local Road
Moderate	IGA Boundary		Rail Line
High			
Very High			
Other Settlement			



Scale at A3 - 1:95,000
 Coordinate System: GDA 1984 Geocentric Australia Lambert
 This document has been prepared on behalf of the State of Queensland and is to be used for non-commercial use only. The State of Queensland does not make any representation, warranty or guarantee express or implied of any kind, including in connection with any damage suffered by third parties, whether caused by negligence or otherwise, that may be incurred or suffered by you in connection with this document or the information it contains. This document is subject to copyright of the Queensland Government. Apart from any third party liability, recovery, or otherwise, or conditions upon the provisions of the Copyright Act 1968, no part may be reproduced or stored without prior written consent of the Department of Natural Resources and Mines.

**Flood Warning Network
 Settlement Risk
 Mulgrave-Russell Basin**